



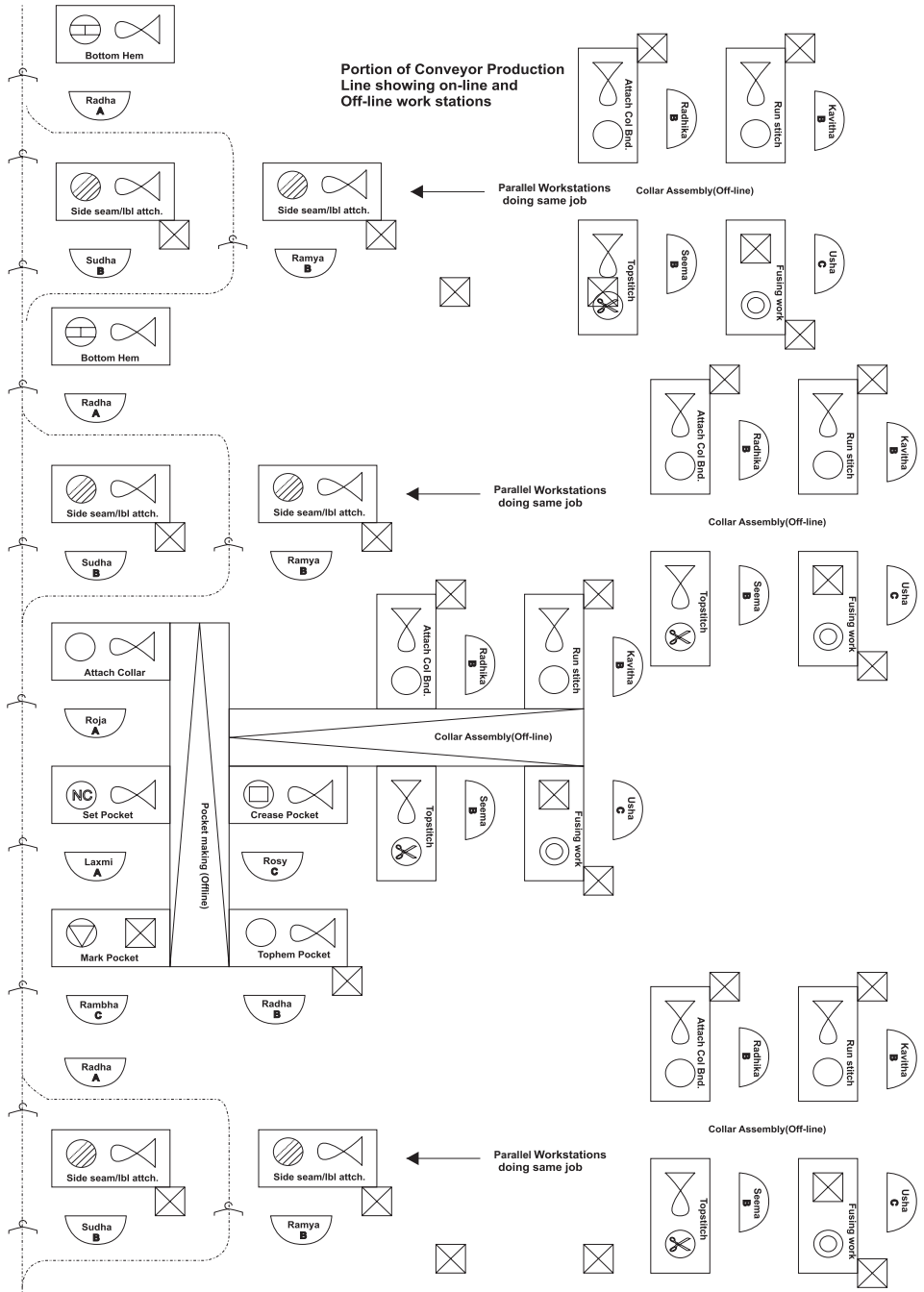
Associates

Fashion**Networks**

Connect | Converse | Collaborate

Retail**Networks**

Connect | Converse | Collaborate

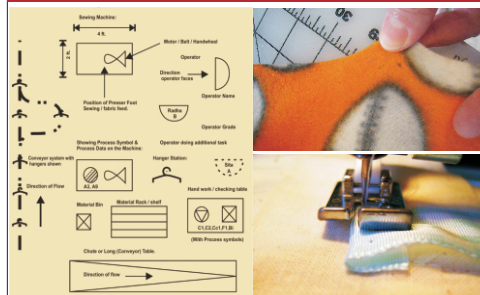


ISHA Training Programmes

Skilled Worker Training	Supervisory Training	Managerial Training
<ul style="list-style-type: none">▪ Industrial Sewing Machine Operation:Basic▪ Industrial Sewing Machine Operation:Advanced▪ Quality Checking▪ Finishing and Packing▪ Pattern Making▪ Computerized Pattern Making▪ Machine Mechanic▪ Computerized Apparel and Textile Design	<ul style="list-style-type: none">▪ Production Supervision▪ Industrial Engineering▪ Quality Assurance▪ Cut Order Planning▪ Garment Costing▪ Assembly Line Balancing▪ Preventive Maintenance▪ Planning and Scheduling	<ul style="list-style-type: none">▪ Production Management▪ Merchandising Management▪ Design Management▪ Supply Chain Management▪ Product Lifecycle Management▪ Retail Analytics▪ Vendor Development▪ Enterprise Resource Planning▪ Lean Manufacturing

Training and Learning Enablement Tools

APPAREL PRODUCTION MANAGEMENT



www.ishalearning.com

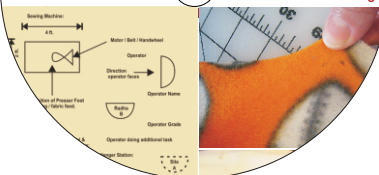
ISHA Learning

Book

APPAREL PRODUCTION MANAGEMENT

www.ishalearning.com

ISHA Learning



CD/DVD

APPAREL DESIGN MANAGEMENT



www.ishalearning.com



Book



CD/DVD

INFORMATION TECHNOLOGY *for* APPAREL

Order ID:

Buyer Name:

Product:

Style No.:

Process Chart No.:

No. of Machine Types:

Target Daily Production:

Build-Up Time:

Earliest Loading Date:

Prepared On:

Line Efficiency:

Total Standard:

Standard Process Time:

Latent Shipping Date:

Total Order:

1

Single needle lock stitch with unbalanced tension

25

2

0.225

0.000000

1

2

Single needle lock stitch on right side

25

3

0.230

0.000000

1

3

Overlock Machine with 4 thread

25

4

0.235

0.000000

1

4

Single needle chain stitch

25

1

0.240

0.000000

1

5

Forming, ironing and creasing work

25

4

0.245

0.000000

2

6

Final check

25

3

0.250

0.000000

2

7

Overlock Machine

25

2

0.255

0.000000

2

8

2 thread 4 thread over lock with safety stitch

25

1

0.260

0.000000

2

Process Chart:

Individual Process Detail:

NAK

NAK

NAK

NAK

www.ishalearning.com



Book



CD/DVD

APPAREL MERCHANDISING MANAGEMENT



www.ishalearning.com

 **ISHA**Learning

Book

APPAREL MERCHANDISING MANAGEMENT

 **ISHA**Learning

www.ishalearning.com



CD/DVD

APPAREL QUALITY ASSURANCE



www.ishalearning.com

 **ISHA**Learning

Book



CD/DVD

APPAREL INDUSTRY ENTREPRENEURSHIP GUIDE



www.ishalearning.com



ISHA Learning

Book

APPAREL INDUSTRY ENTREPRENEURSHIP GUIDE



CD/DVD

Training and Learning Enablement Tools

**Industrial
Sewing
Machine
Operator (ISMO)**



www.ishalearning.com

 **ISHA**Learning

Book



CD/DVD

Quality Checking

	XS	S	M	L	XL	XXL
Sleeve Length	8"	8-1/4"	8-1/2"	8-3/4"	9"	9-1/4"
Chest Width	16-1/2"	18"	20"	22"	24"	26"
Front Body Length	27-3/8"	28-3/8"	29-3/8"	30-3/8"	31-3/8"	32-3/8"



www.ishalearning.com

 ISHA Learning

Book

Quality Checking

 ISHA Learning

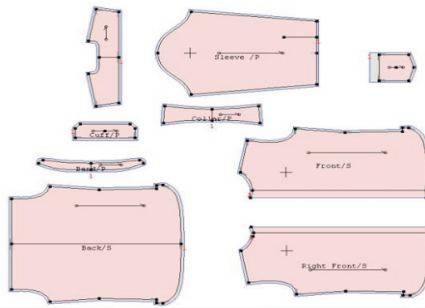
www.ishalearning.com

Front Body Length	27-3/8"	28-3/8"	29-3/8"	30-3/8"	31-3/8"	32-3/8"
-------------------	---------	---------	---------	---------	---------	---------



CD/DVD

Pattern Making



www.ishalearning.com

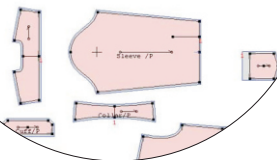
 ISHA Learning

Book

Pattern Making

 ISHA Learning

www.ishalearning.com



CD/DVD

Finishing *and* Packing



www.ishalearning.com

 ISHA Learning

Book

Finishing *and* Packing



CD/DVD

Machine Mechanic



www.ishalearning.com

 **ISHA**Learning

Book

Machine Mechanic

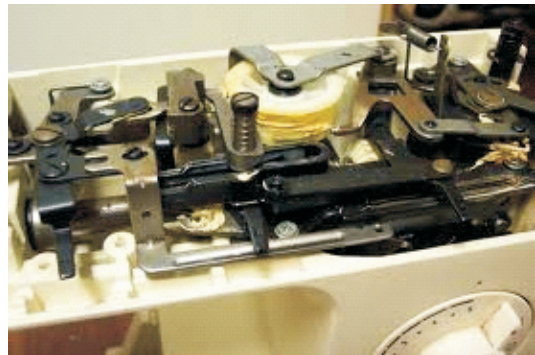
 **ISHA**Learning

www.ishalearning.com



CD/DVD





ISHA Learning Systems enables corporates in the retail, apparel, textile, leather and other soft goods industries create people supply chains well in advance enabling them to significantly reduce their People Sourcing and People Training Costs.

ISHA does this by partnering with corporates to understand their talent needs and then working with government departments, self help groups, NGO s,academic institutions and individuals to create people supply chains.

As a part of this process ISHA offers a range of services to

Government Departments/ Self Help Groups/ NGOs: Employability Training of Skilled Workers and Supervisors for wage and self employment, Business Plan Creation, Plant Setup Planning, Processes and Systems Definition, Market Linkages

Corporates: Entry Level Recruitment Services, Entry Level Assessment Services,Business Plan Creation, Plant Setup Planning ,Processes and Systems Definition, Market Linkages, e-learning products and services.

Academic Institutions: Employability Training for Students enabling them to be 'Workplace Ready', establishment of Career Centers within the academic institutions' premises, Assessment and Certification Services, Internship and Placement Outsourcing Services, Training Enablement Tools like Syllabus Specific Multimedia and Online Content, Work Books, CDs, e-learning products and services, Faculty Training.

Individuals: Employability Training enabling them to be 'Workplace Ready ', Study Aids like Syllabus Specific Multimedia and Online Content, Work Books, CDs, Assessment and Certification Services.

and

Educational Services Providers: e-learning products and services

